

Power, Reach and Potential of Cooperatives

Cooperating to Enhance Native Food Economies:

Role of cooperatives in developing agriculture infrastructure and food systems in Indian Country

August 2, 2021

Who We Are



- Apex membership association for US cooperatives.
- Mission to advocates for and promote cooperatives with policy makers and the public.
- Vision of putting co-ops in the center of the conversation around building a more inclusive economy
- Members are cooperatively owned businesses in all sectors of the economy.
- 501 (c) 6 business association



- CDF makes grants, loans, and investments that support cooperative development, strengthen Main Street cooperative businesses, create good, sustainable jobs, and enhance the lives of people and communities.
- 501(c) 3 public charity

Cooperative Difference

The focus of the cooperative is not return on investment, but the service it provides to its members and communities.

- Cooperatives are **user owned**.
- Cooperatives are **user controlled**.
- Cooperatives **benefit users**.



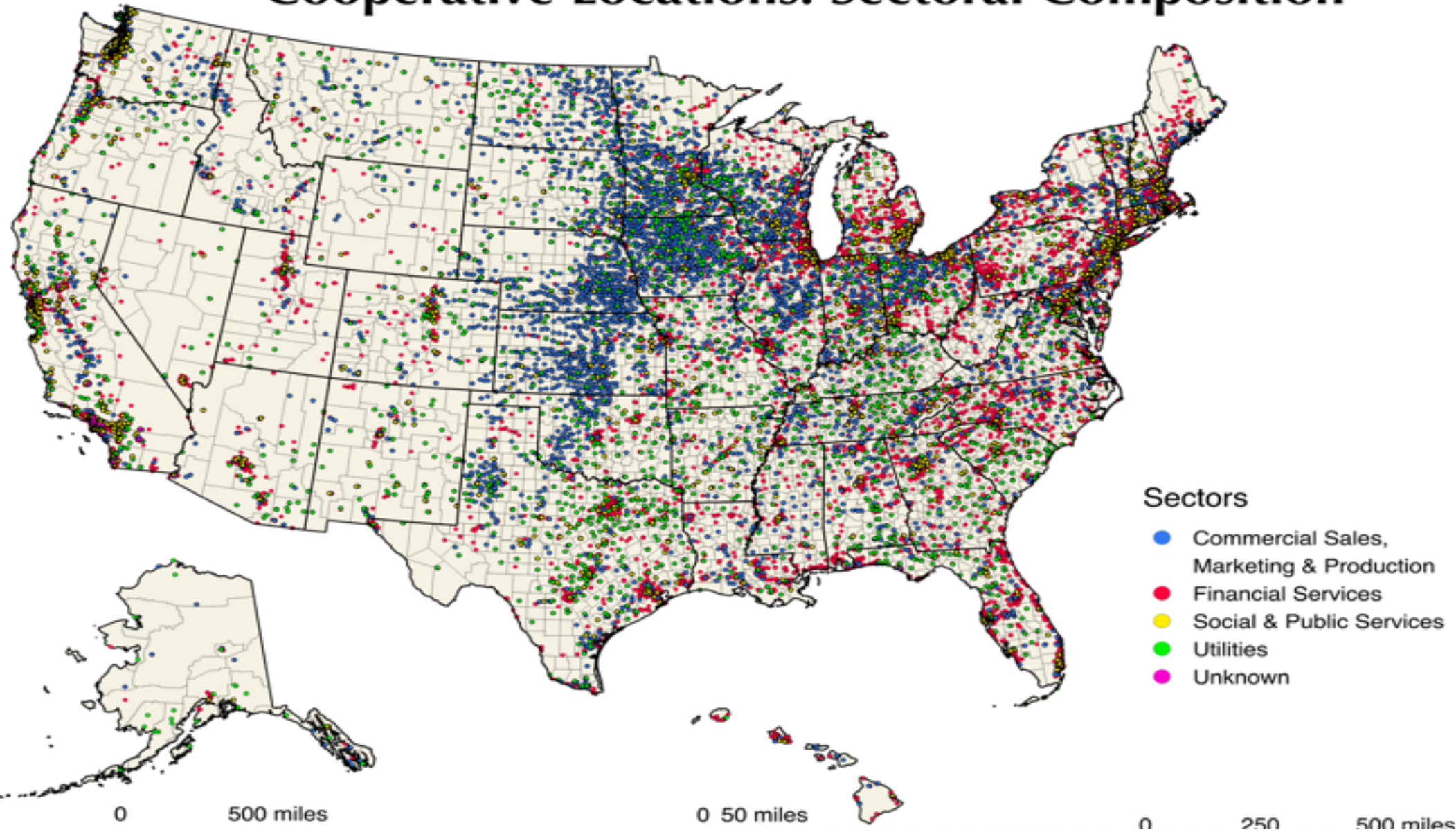


Cooperative Impact

Why Co-ops are formed

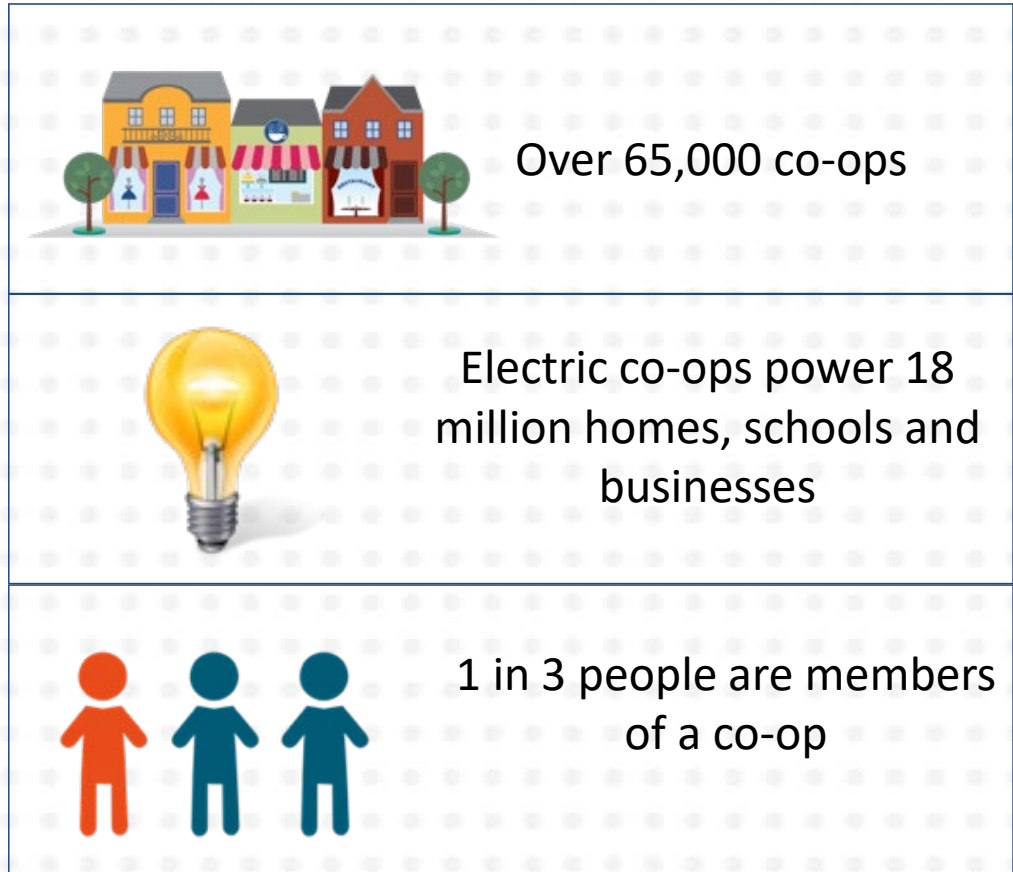
- address **market failures** where neither the private sector nor the government provide a needed service
- **help small players gain parity** with large investor-owned competitors
- **give people a deliberate choice** of enterprise to better meet their common needs and aspirations

Cooperative Locations: Sectoral Composition



COOPERATIVES IN THE ECONOMY

- U.S. co-ops provide nearly **2 million jobs** and create more than **\$74 billion in annual wages** with a **revenue of \$650 billion**.
- Counties, schools, hospitals, and public agencies typically use cooperatives to purchase at scale.
- Nearly a million of the nation's farmers belong to a co-op, accounting for **the majority of US agriculture sales**.
- There are **3 million co-ops globally**. Their members account for **12% of the world's population**.





Benefits of Cooperation



responsive to its member-owners, and in turn to the local community.



puts **power** in the hands of community members.



develops, sustains, and grows an organized base of people and leaders who act together through **democratic structures**.



rooted in the cooperative shared values of **equality, equity,** and **solidarity**.

THANK YOU



National Cooperative Business Association
CLUSA International
1775 Eye Street, NW • 8th Floor
Washington, DC 20006
Phone: (202) 638-6222
Email: info@ncba.coop
Web site: <http://www.ncbaclusa.coop>



Cooperative Development Foundation
1775 Eye Street, NW • 8th Floor
Washington, DC 20006
Phone: (202) 442-2302
Email: info@cdf.coop
Web site: <http://www.cdf.coop>

Dobrien@ncba.coop